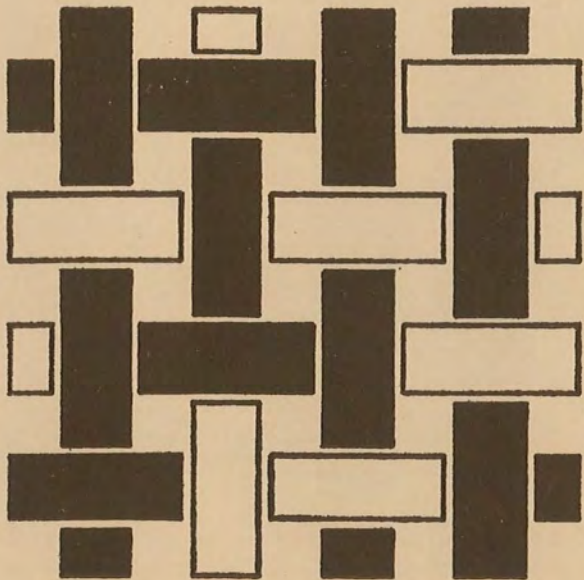


D.C.T. LIBRARY
ARCHIVES
COPY
NOT FOR LOAN



BELCONNEN SERVICES

INCLUDING BUS TIMETABLE
AND ROUTE INFORMATION
EFFECTIVE FROM 23 DECEMBER, 1968

A Department of the Interior Publication

● INFORMATION SERVICE

There are Information Officers from both the Department of the Interior and the National Capital Development Commission at the Belconnen Information Centre. This is located at the corner of Weetangera Rd. and Banambila St., Aranda. The Department's other Information Bureau is located on the Ground Floor, North Building, Civic Offices, London Circuit, Canberra City.

The Department of the Interior has established these Bureaux to assist all residents of Canberra—and especially newcomers to the city—with information and advice about the various municipal and other public services available.

The staff of the Bureaux welcome any enquiries of this kind.

The Belconnen Information Centre is open on Mondays and Tuesdays from 1.30 p.m.—5.30 p.m., Wednesday to Friday from 9.00 a.m.—5.20 p.m. and on weekends from 9.00 a.m.—5.30 p.m. The telephone number is 51 1145.

The Civic Centre Bureau is open from 9.00 a.m.—5.30 p.m., Monday to Friday and from 9.00 a.m.—11.30 a.m. on Saturday. The telephone number 4 0411 extension 271.

● MAINTENANCE

Government tenants are responsible for some items of maintenance. A list of these items is contained in the handbook which is issued to each tenant.

Requests for maintenance, for items which are not the responsibility of the tenant, should be made to the A.C.T. Electricity Authority or the Department of Works. The phone numbers are: 9 0242 for electrical work at all hours; 7 1502 for other work in office hours; and 9 0438 for other work outside office hours.

● EMERGENCY SERVICES

FIRE

POLICE

AMBULANCE

DIAL 000

**AND ASK THE
OPERATOR TO
CONNECT YOU**

It is of the greatest importance that the number '000' should be dialled only for EMERGENCY calls to the Fire, Police, or Ambulance services and never for any other purpose. An unnecessary '000' call may hold up an emergency call on which somebody's life depends.

For normal calls to the above establishments the following numbers should be used.

Fire Station	{ (North Side)	48 0344
				{ (South Side)	7 2244
Police	49 7444
Ambulance	49 8133
Bush Fires	4 4288
Hospital	48 9922

Household emergency only:

Electric Light and Power	9 0242
Water and Sewerage (Burst mains only)				
Office hours	7 1502
After hours	9 0438

● BUILDING ENQUIRIES

All enquiries about building should be directed to the Building Section, Department of the Interior, telephone 49 1355.

● EDUCATION

From the first term of 1969 three primary schools will operate in the Belconnen District. These will be at Macquarie, which opened at the beginning of the 1968 school year, Aranda and Cook. Enrolments of children for Aranda and Macquarie will be restricted to children from the immediate suburbs. Cook Primary School in addition to catering for students from its own area will enrol children from Page and Scullin and other Belconnen suburbs as they are opened up, until schools are built in these areas.

The Canberra High School will open from the first term 1969 in its new buildings at the corner of Belconnen Way and Bindubi Street, Macquarie. It will accommodate all six forms and will enrol children from every suburb of Belconnen.

Children wishing to enrol in a Roman Catholic primary school should attend St Joseph's Convent School, O'Connor, or St Michael's Catholic School, Lyneham. Enquiries about secondary education should be made to the Catholic Education Office (telephone 95 1186).

● CANBERRA'S COMMUNITY SERVICES

The Department of the Interior issues a handbook—free of charge—in which most of the municipal-type services are listed, together with other valuable information for those new to Canberra. Copies of this handbook—Canberra's Community Services—are available from the Department's Information Centres.

● GARBAGE CLEARANCES

Please put your household garbage on the verge of the road on Sunday and Wednesday nights. This collection is restricted to kitchen waste—vegetable peelings, food scraps, tins and bottles. Please wrap the garbage in paper before you put it in your garbage tin. Make sure your tin is watertight, about 20 inches deep by 16 inches wide. It should have two handles and a well-fitting overlapping lid.

If one tin is insufficient, two may be placed out.

All other rubbish—builders' debris, large cartons, tree and garden clippings—should be dumped at the Belconnen tip. The road to the tip is an extension to Weetangera Rd. between Bundini St., and Creswell Dr., Aranda.

● POSTAL SERVICES

Post-offices are in Aranda (non-official), at Jamison Centre in Macquarie with another non-official post-office at the Macquarie Place shops.

There are eight letter receivers—post-boxes—in the Belconnen area. They are located in Arabana Street, Aranda; there are three in Bandjalong Crescent, Aranda; one in Littleton Street, Cook; one in Redfern Street, Cook; one in Lachlan Street, Macquarie; and one is located at the Macquarie Place shops.

There are public telephones at all the post-offices—Jamison Centre, Macquarie Place and Aranda.

● BUS SERVICES

(For Bus Enquiries phone 9 0251)



CITY-ARANDA-MACQUARIE-PAGE-SCULLIN-HIGGINS (ROUTE No. 40)

Monday to Friday

	a.m.	a.m.	a.m.	a.m.	a.m.	a.m.	a.m.	a.m.	a.m.	a.m.	a.m.	p.m.	p.m.	p.m.	p.m.	p.m.	p.m.	p.m.	p.m.	p.m.	p.m.	p.m.	p.m.	p.m.	p.m.	p.m.	p.m.	p.m.	p.m.	p.m.
City	6.40	7.10	8.10	8.35	8.55	9.30	10.00	10.30	11.00	11.30	12.00	12.30	1.00	1.30	2.00	2.30	3.00	3.30	4.00	4.42	5.00	5.20*	5.45	6.20	7.50	8.25	9.10	9.50	10.40	11.10
Aranda (Bandjalong Cres.-Bindel St.) ..	6.54	7.24	8.24	8.49	9.09	9.44	10.14	10.44	11.14	11.44	12.14	12.44	1.14	1.44	2.14	2.44	3.14	3.44	4.14	4.56	5.14	5.34	5.59	6.34	8.04	8.39	9.24	10.04	10.54	11.24
Macquarie (Bennelong Cres.-Lachlan St.) ..	7.02	7.32	8.32	8.57	9.17	9.52	10.22	10.52	11.22	11.52	12.22	12.52	1.22	1.52	2.22	2.52	3.22	3.52	4.22	5.04	5.22	5.42	6.07	6.42	8.12	8.47	9.32	10.12	11.02	11.32
Page Shops	7.06	7.36	8.36	9.01	9.21	9.56	10.26	10.56	11.26	11.56	12.26	12.56	1.26	1.56	2.26	2.56	3.26	3.56	4.26	5.08	5.26	5.46	6.11	6.46	8.16	8.51	9.36	10.16	11.06	11.36
Scullin Shops	7.11	7.41	8.41	9.06	9.26	10.01	10.31	11.01	11.31	12.01	12.31	1.01	1.31	2.01	2.31	3.01	3.31	4.01	4.31	5.13	5.31	5.51	6.16	6.51	8.21	8.56	9.41	10.21	11.11	11.41
Higgins	7.15	7.45	8.45	9.10	9.30	10.05	10.35	11.05	11.35	12.05	12.35	1.05	1.35	2.05	2.35	3.05	3.35	4.05	4.35	5.17	5.35	5.55	6.20	6.55	8.25	9.00	9.45	10.25	11.15	11.45

* Connects with bus from Phillip Offices.

HIGGINS-SCULLIN-PAGE-MACQUARIE-ARANDA-CITY (ROUTE No. 40)

Monday to Friday

	a.m.	a.m.	a.m.	a.m.	a.m.	a.m.	a.m.	a.m.	a.m.	a.m.	a.m.	p.m.	p.m.	p.m.	p.m.	p.m.	p.m.	p.m.	p.m.	p.m.	p.m.	p.m.	p.m.	p.m.	p.m.	p.m.	p.m.	p.m.	p.m.	p.m.
Higgins	6.30	7.25*	7.50	8.10	8.50	9.15	9.45	10.15	10.45	11.15	11.45	12.15	12.45	1.15	1.45	2.15	2.45	3.15	3.45	4.15	4.45	5.40	6.25	7.00	8.30	9.05	9.55	10.30		
Scullin Shops	6.34	7.29	7.54	8.14	8.54	9.19	9.49	10.19	10.49	11.19	11.49	12.19	12.49	1.19	1.49	2.19	2.49	3.19	3.49	4.19	4.49	5.44	6.29	7.04	8.34	9.09	9.59	10.34		
Page Shops	6.39	7.34	7.59	8.19	8.59	9.24	9.54	10.24	10.54	11.24	11.54	12.24	12.54	1.24	1.54	2.24	2.54	3.24	3.54	4.24	4.54	5.49	6.34	7.09	8.39	9.14	10.04	10.39		
Macquarie (Bennelong Cres.-Lachlan St.) ..	6.43	7.38	8.03	8.23	9.03	9.28	9.58	10.28	10.58	11.28	11.58	12.28	12.58	1.28	1.58	2.28	2.58	3.28	3.58	4.28	4.58	5.53	6.38	7.13	8.43	9.18	10.08	10.43		
Aranda (Bandjalong Cres.-Bindel St.) ..	6.51	7.46	8.11	8.31	9.11	9.36	10.06	10.36	11.06	11.36	12.06	12.36	1.06	1.36	2.06	2.36	3.06	3.36	4.06	4.36	5.06	6.01	6.46	7.21	8.51	9.26	10.16	10.51		
City	7.05	8.00	8.25	8.45	9.25	9.50	10.20	10.50	11.20	11.50	12.20	12.50	1.20	1.50	2.20	2.50	3.20	3.50	4.20	4.50	5.20	6.15	7.00	7.35	9.05	9.40	10.30	11.05		

* Connects with bus from Phillip Offices.

Note: Until notified the service on Route 40 will operate to Scullin Shops only.

CITY-ARANDA-MACQUARIE-PAGE-SCULLIN-HIGGINS (ROUTE No. 40)

Saturday, Sunday, Public Holidays

		a.m.	a.m.	a.m.	a.m.	a.m.	a.m.	a.m.	p.m.	p.m.	p.m.	p.m.	p.m.	p.m.	p.m.	p.m.	p.m.	p.m.	p.m.	p.m.
City	..	7.25	8.10	8.55	9.40	10.25	11.10	11.45	12.45	1.15	2.25	3.10	4.15	5.10	6.10	7.35	8.35	9.15	10.15	11.10
Aranda (Bandjalong Cres.-Bindel St.)	..	7.39	8.24	9.09	9.54	10.39	11.24	11.59	12.59	1.29	2.39	3.24	4.29	5.24	6.24	7.49	8.49	9.29	10.29	11.24
Macquarie (Bennelong Cres.-Lachlan St.)		7.47	8.32	9.17	10.02	10.47	11.32	12.07	1.07	1.37	2.47	3.32	4.37	5.32	6.32	7.57	8.57	9.37	10.37	11.32
Page Shops	..	7.51	8.36	9.21	10.06	10.51	11.36	12.11	1.11	1.41	2.51	3.36	4.41	5.36	6.36	8.01	9.01	9.41	10.41	11.36
Scullin Shops	..	7.56	8.41	9.26	10.11	10.56	11.41	12.16	1.16	1.46	2.56	3.41	4.46	5.41	6.41	8.06	9.06	9.46	10.46	11.41
Higgins	..	8.00	8.45	9.30	10.15	11.00	11.45	12.20	1.20	1.50	3.00	3.45	4.50	5.45	6.45	8.10	9.10	9.50	10.50	11.45

HIGGINS-SCULLIN-PAGE-MACQUARIE-ARANDA-CITY (ROUTE No. 40)

Saturday, Sunday, Public Holidays

		a.m.	a.m.	a.m.	a.m.	a.m.	a.m.	a.m.	a.m.	p.m.	p.m.	p.m.	p.m.	p.m.	p.m.	p.m.	p.m.	p.m.	p.m.	p.m.	
Higgins	..	6.40	7.25	8.10	8.55	9.40	10.25	11.05	11.55	12.25	1.40	2.10	3.10	4.10	5.10	6.10	7.00	8.15	9.15	10.15	10.55
Scullin Shops	..	6.44	7.29	8.14	8.59	9.44	10.29	11.09	11.59	12.29	1.44	2.14	3.14	4.14	5.14	6.14	7.04	8.19	9.19	10.19	10.59
Page Shops	..	6.49	7.34	8.19	9.04	9.49	10.34	11.14	12.04	12.34	1.49	2.19	3.19	4.19	5.19	6.19	7.09	8.24	9.24	10.24	11.04
Macquarie (Bennelong Cres.-Lachlan St.)		6.53	7.38	8.23	9.08	9.53	10.38	11.18	12.08	12.38	1.53	2.23	3.23	4.23	5.23	6.23	7.13	8.28	9.28	10.28	11.08
Aranda (Bandjalong Cres.-Bindel St.)	..	7.01	7.46	8.31	9.16	10.01	10.46	11.26	12.16	12.46	2.01	2.31	3.31	4.31	5.31	6.31	7.21	8.36	9.36	10.36	11.16
City	..	7.15	8.00	8.45	9.30	10.15	11.00	11.40	12.30	1.00	2.15	2.45	3.45	4.45	5.45	6.45	7.35	8.50	9.50	10.50	11.30

Note: Until notified the service on Route 40 will operate to Scullin Shops only.