

AUSTRALIAN CAPITAL TERRITORY

STOCK ORDINANCE 1934

NOTICE OF CLOSURE OF TRAVELLING STOCK RESERVE

Under section 25 A (2) of the Stock Ordinance 1934 of the Australian Capital Territory, I DECLARE that the land described in the Schedule shall cease to be travelling stock reserves.

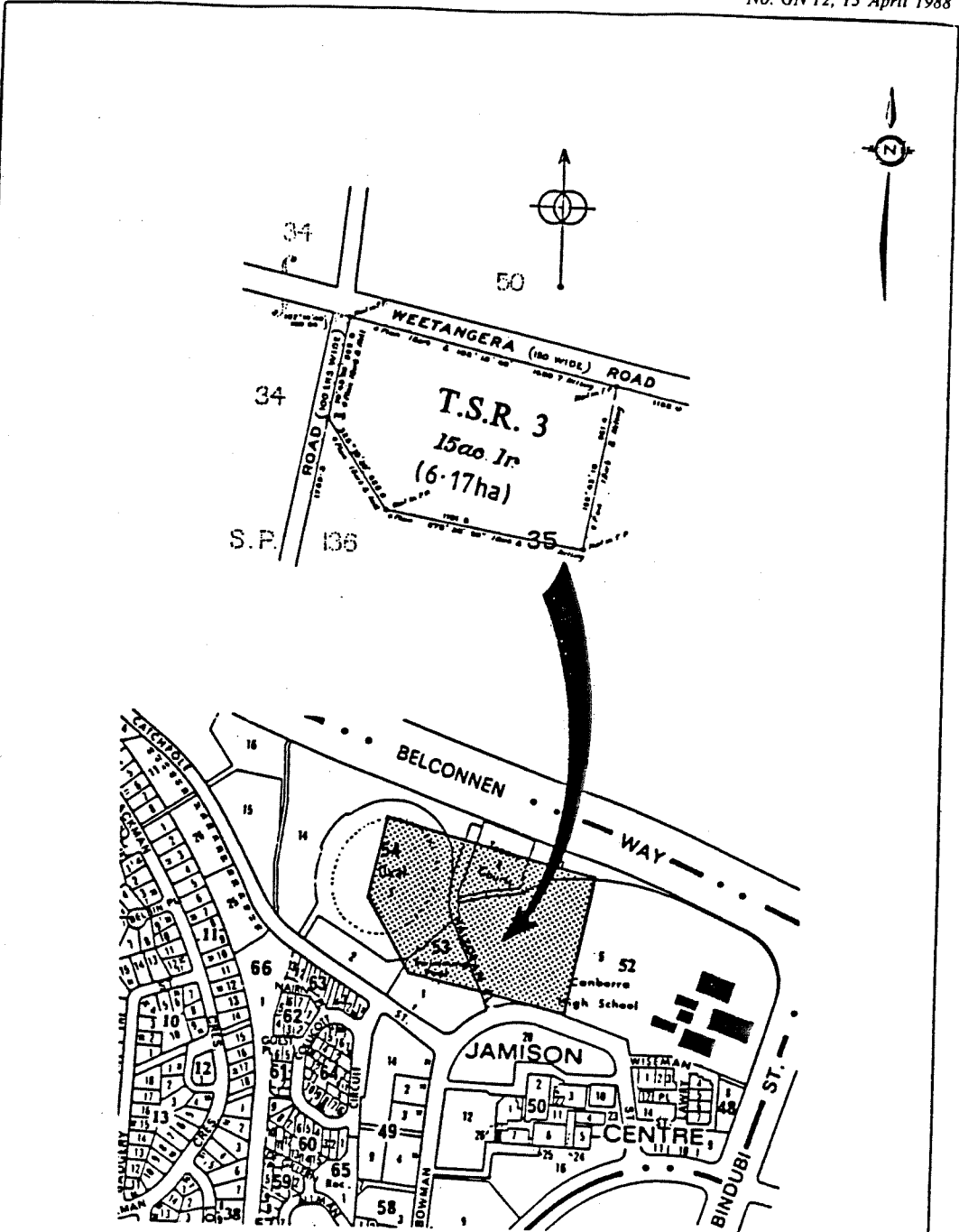
SCHEDULE

<u>LOCATION</u>	<u>DESCRIPTION</u>
Division of Macquarie TSR-3	The area of land containing approximately 6.17 ha shown shaded on Plan No. 1.
District of Belconnen TSR-7	The area of land containing approximately 19.42ha shown shaded on Plan No. 2
District of Majura TSR-4	The area of land containing approximately 7.69ha shown shaded on Plan No. 3.
District of Belconnen TSR-2	The area of land containing approximately 21.85ha shown shaded on Plan No 4.

Dated this THIRTY FIRST day of March 1986


  
Raymond George Gallagher  
Delegate of the Minister of State  
for the Arts and Territories.

16

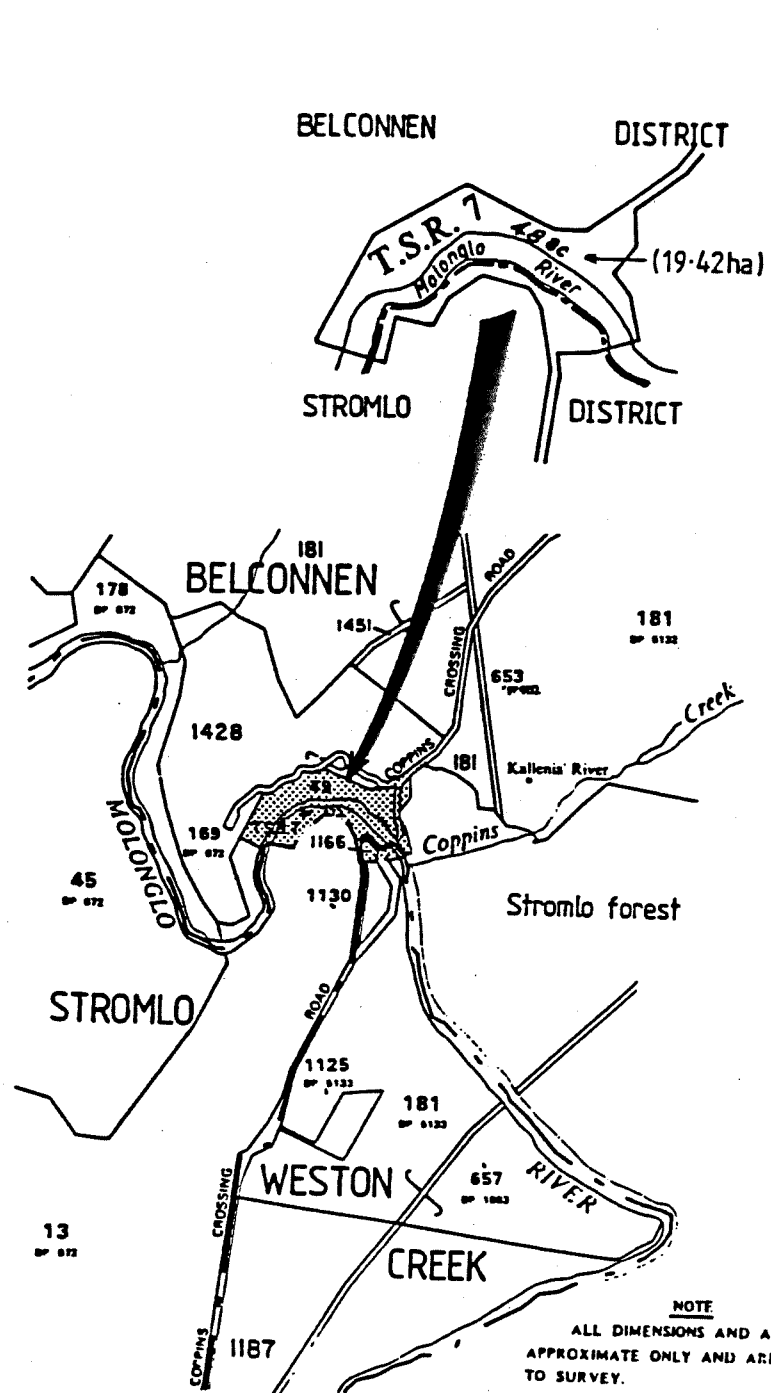


NOTE  
ALL DIMENSIONS AND AREAS ARE  
APPROXIMATE ONLY AND ARE SUBJECT  
TO SURVEY.

L88/25

 <p>ACT ADMINISTRATION OFFICE OF INDUSTRY AND DEVELOPMENT TECHNICAL AND STATUTORY SUPPORT DRAUGHTING OFFICE</p>	Scale	<p>This is Plan No.1 annexed to Instrument No.1 on 2/14 day of March 1988 by the Delegate of the Minister for the Arts and Territories.</p> <p>----- Delegate's initials</p>
	<p>chd 7-1-88</p>	

15



**NOTE**  
 ALL DIMENSIONS AND AREAS ARE  
 APPROXIMATE ONLY AND ARE SUBJECT  
 TO SURVEY.

L88/27

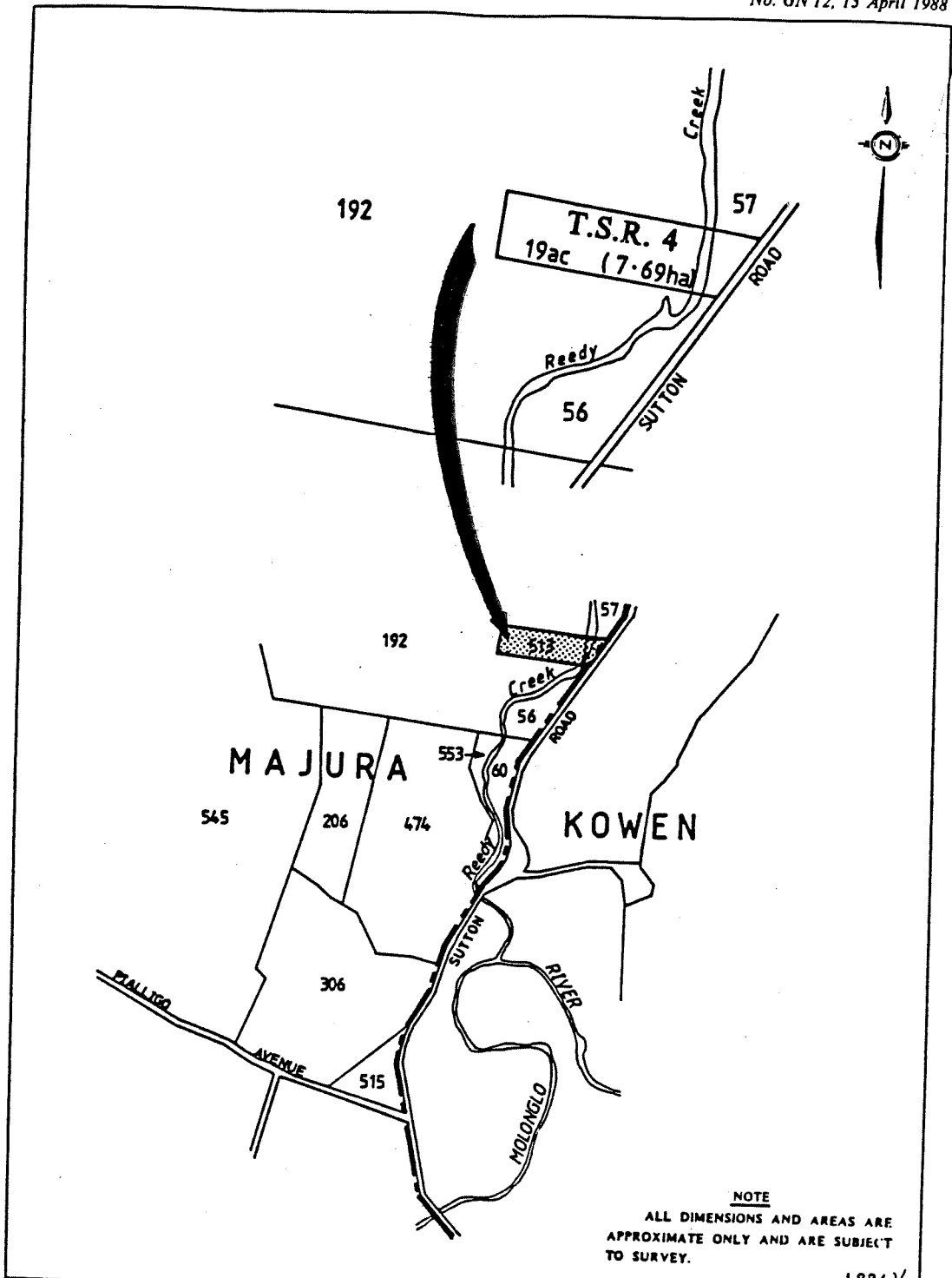


ACT ADMINISTRATION  
 OFFICE OF INDUSTRY AND DEVELOPMENT  
 TECHNICAL AND STATUTORY SUPPORT  
 DRAUGHTING OFFICE

Scale  
 1:1000  
 7-3-88


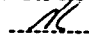
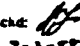
This is Plan No. 2 annexed to Instrument No. 1  
 on 31st day of August 1988 by the Delegate of  
 the Minister for the Arts and Territories.

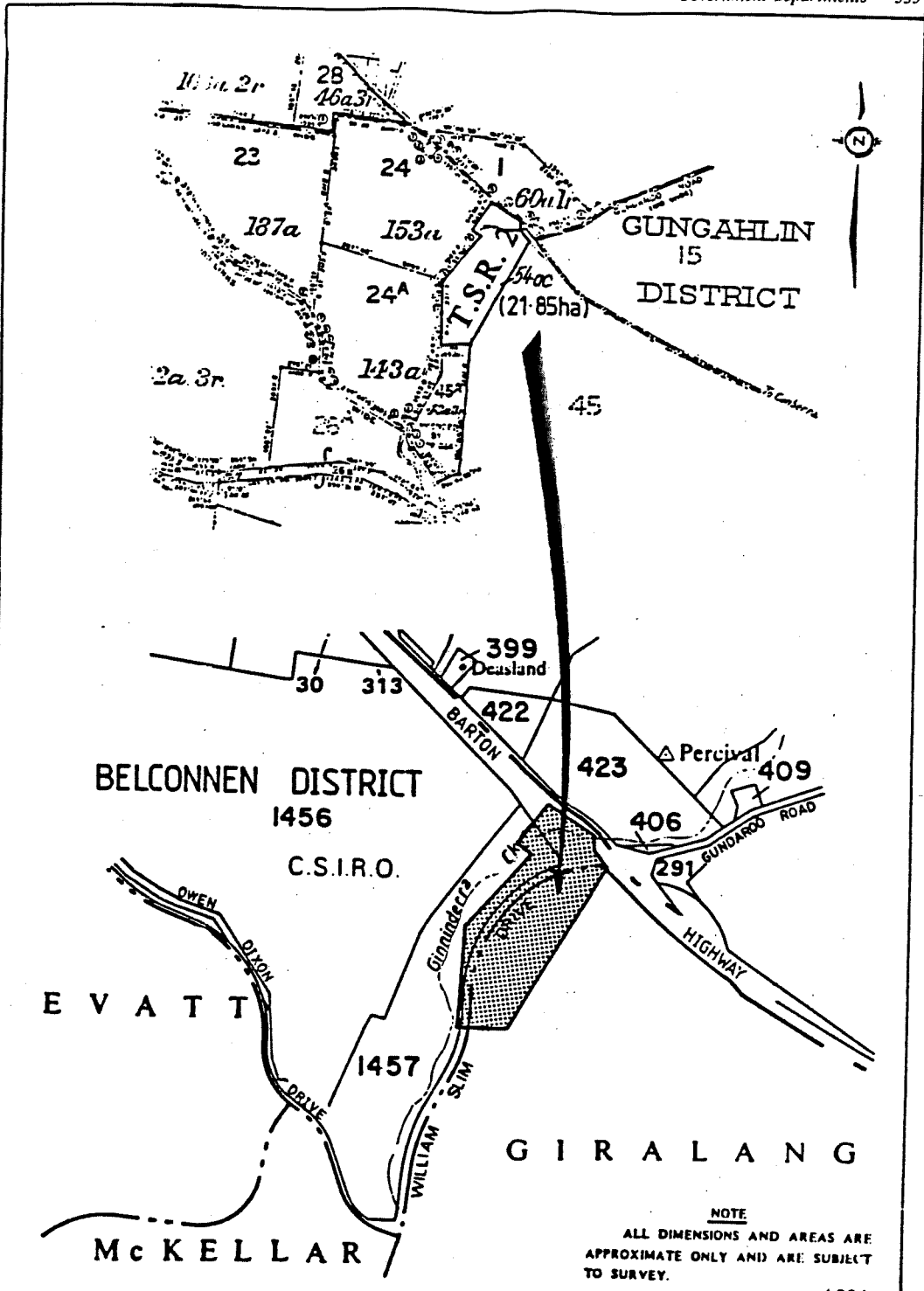
*[Signature]*  
 Delegate's initials




**NOTE**  
ALL DIMENSIONS AND AREAS ARE APPROXIMATE ONLY AND ARE SUBJECT TO SURVEY.

L88/26

 <p>ACT ADMINISTRATION OFFICE of INDUSTRY and DEVELOPMENT TECHNICAL and STATUTORY SUPPORT DRAUGHTING OFFICE</p>	<p>Scale</p>	<p>This is Plan No. 3 annexed to Instrument No. 1 on 31<sup>st</sup> day of April 1988 by the Delegate of the Minister for the Arts and Territories.</p> <p>-----            Delegate's initials</p>
	<p>chc  7-3-88</p>	



L88/2.


 ACT ADMINISTRATION  
 OFFICE OF INDUSTRY AND DEVELOPMENT  
 TECHNICAL and STATUTORY SUPPORT  
 DRAUGHTING OFFICE

Scale  
 chd. *df.*  
 7-3-88

This is Plan No. 4 annexed to Instrument No. 1  
 on 31st day of March 1988 by the Delegate of  
 the Minister for the Arts and Territories.  
 \_\_\_\_\_  
 Delegate's initials